

PRODUCT INFORMATION

Manufacturer

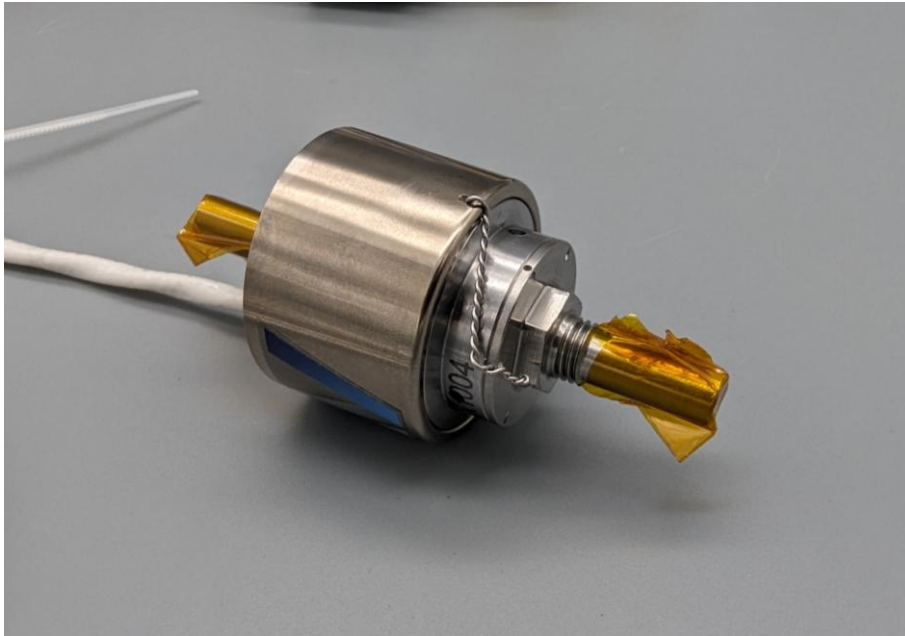
deltaVision GmbH
Hofmannstr. 50
81379 München
Germany

Product

Bi-stable Solenoid Valve

Product type

L2a

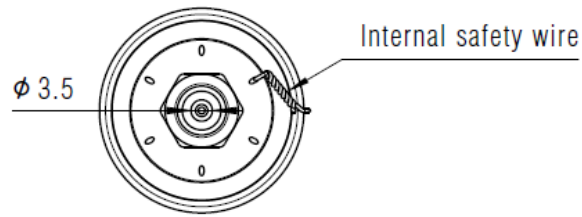


L2a

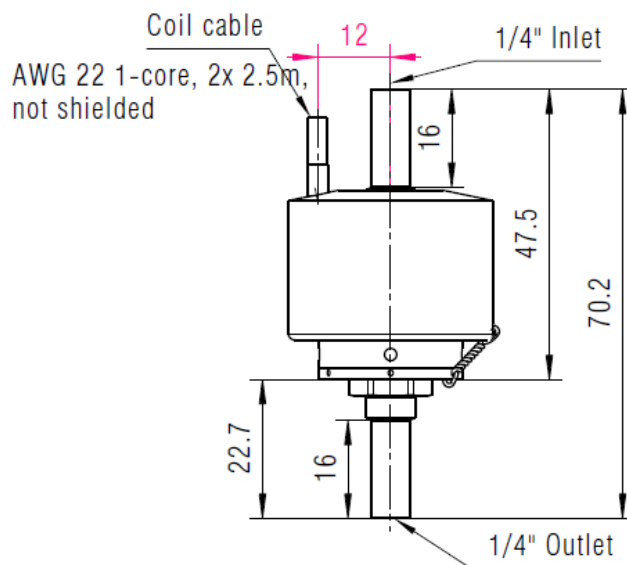
Weight	160 g
Dimensions	Ø34 x 71 mm ³
Interfaces	2 x ¼ " tube
Materials fluid channel	Stainless steel series 300 and 400, PEEK, PTFE
Nominal voltage	24 V ± 4 V DC
Resistance nominal	46.0 ± 2.0 Ω / 20°C
Nominal power	TBD
Nominal diameter	2mm
Flow coefficient Kv	0.08 m ³ /h
Differential pressure	Up to 70 bar (application dependent)
Operating pressure	Up to 70 bar (application dependent)
Proof pressure	Up to 105 bar (application dependent)
Ambient temperature (range)	253K ... 343K (application dependent)
Approved operating fluids	Inert media, Hydrocarbons, H ₂ , O ₂ Optional: Storables, N₂O, HTP (short term)
Opening time nominal	< 30 ms (application dependent)
Closing time nominal	< 30 ms (application dependent)
Internal leakrate	< 1E-3 scc/s (application dependent)
External leakrate	< 1E-5 scc/s (application dependent)
Flight Heritage	No

The reproduction, distribution and utilization of this document as well as the communication of its contents to others without express authorization is prohibited. Offenders will be held liable for the payment of damages. All rights reserved in the event of the grant of a patent, utility model or design.

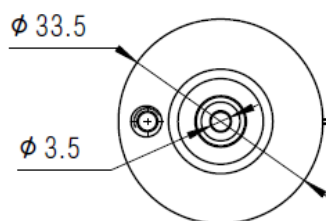
Weitergabe sowie Verwertung dieses Dokuments, Verwertung und Mitteilung seines Inhalts sind verboten, soweit nicht ausdrücklich gestattet. Zuwiderhandlungen verpflichten zu Schadensersatz. Alle Rechte für den Fall der Patent-, Gebrauchsmuster- oder Geschmacksmustererlangung vorbehalten.



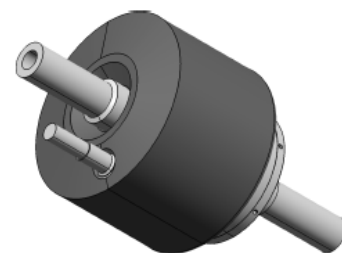
Maßstab: 1:1



Maßstab: 1:1



Maßstab: 1:1



Isometrisch
Maßstab: 1:1

ISO 1302		ISO 13715		 deltaVision GmbH	Name		L2a_ICD								
					prd-Nr.		Projekt								
Beschichtung					prd-00056323		Latch Valve L2								
Material					drw-Nr.		Ref.								
Masse		Status		Version		Autor		drw-Nr.		Ref.		Format			
0,15 kg		Released		A		galalombardo05		7/9/2025		drw-00004456		ISO 8015		A4	
												DIN ISO 5456-2			
												ISO 2768-mK			