

## PRODUCT INFORMATION

**Manufacturer**

deltaVision GmbH  
Hofmannstr. 50  
81379 München  
Germany

**Product**

Fill and Drain Valve  
Fill and Drain Valve Coupler

**Product type**

F4a  
F4a GHC



#### **F4a**

Weight	110 g incl. cap (flight part)
Dimensions	Ø50 x 50 mm <sup>3</sup>
Nominal diameter	4mm
Differential pressure (max.)	70 bar
Operating pressure (max.)	70 bar
Approved operating fluids	Inert media, Hydrocarbons, H <sub>2</sub> , O <sub>2</sub> <b>Optional: Storables, N<sub>2</sub>O, HTP (short term)</b>
Proof pressure	105 bar
Ambient temperature (range)	233K ... 343K (designed, tested RT)
Interfaces	M14x1 & 3/8" tube; screwed flange to stage
External leakage	<1e-5 scc/s GN2
Flight Heritage	No

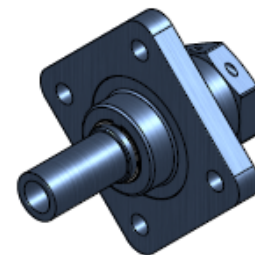
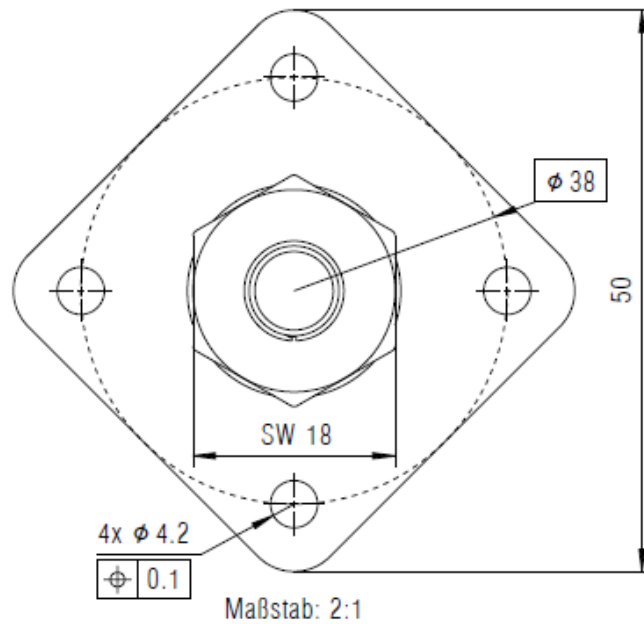
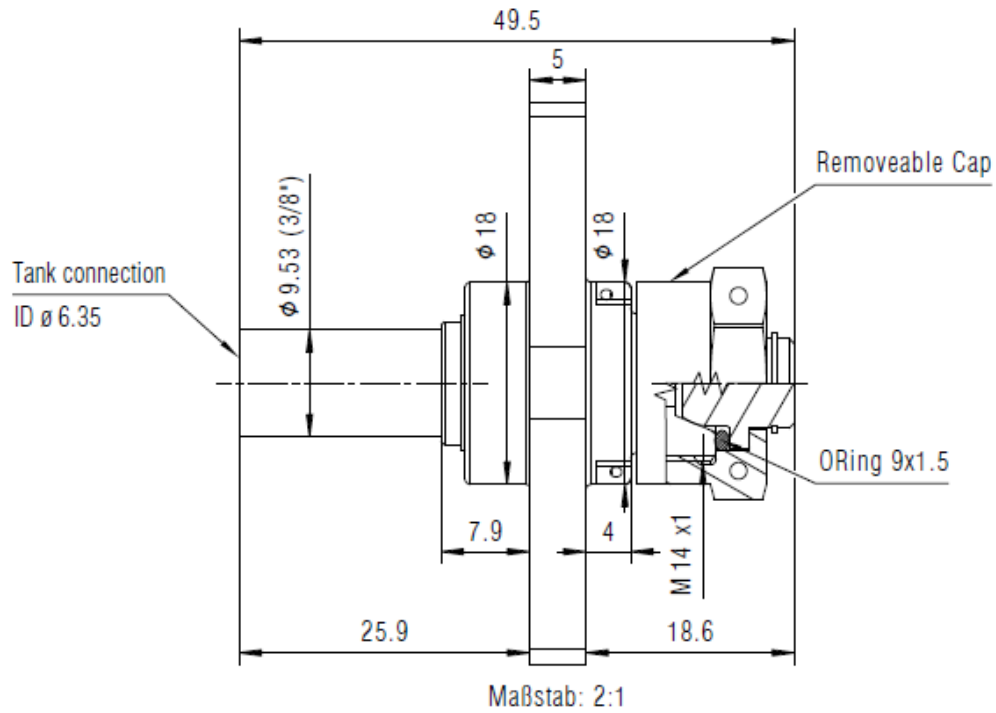
#### **F4a GHC**

Weight	520 g
Dimensions	Ø50 x 168 mm <sup>3</sup>
Nominal diameter	4mm
Differential pressure (max.)	70 bar
Operating pressure (max.)	70 bar
Approved operating fluids	Inert media, Hydrocarbons, H <sub>2</sub> , O <sub>2</sub> <b>Optional: Storables, N<sub>2</sub>O, HTP (short term)</b>
Proof pressure	105 bar
Ambient temperature (range)	233K ... 343K (designed, tested RT)
Interfaces	M14x1; screwed flange to stage
External leakage	<1e-5 scc/s GN2



**Please note:** Delivered valves are tested according to the specifications defined in the corresponding sales order. The values shown represent the upper performance limits, with actual configurations optimized for the best balance of parameters to meet your application needs and budget.

The reproduction, distribution and utilization of this document as well as the communication of its contents to others without express authorization is prohibited. Offenders will be held liable for the payment of damages. All rights reserved in the event of the grant of a patent, utility model or design.

Wiedergabe sowie Verbreitung dieses Dokument, Vervielfältigung und Mitteilung seines Inhalts sind verboten, soweit nicht ausdrücklich gestattet. Zuwiderhandlungen verpflichten zu Schadenersatz. Alle Rechte für den Fall der Patent-, Gebrauchsmuster- oder Geschmucksmusteranmeldung vorbehalten.

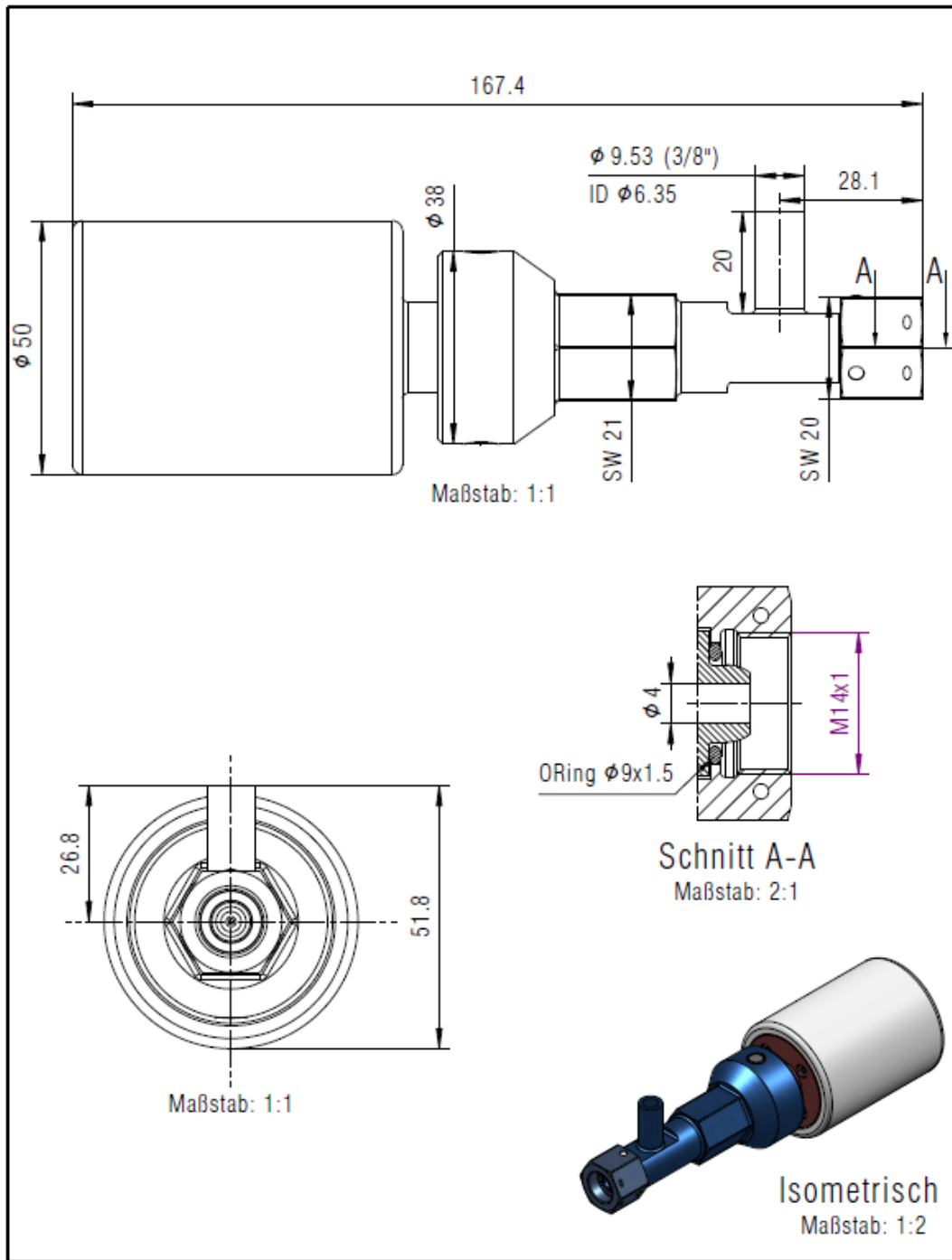




Isometrisch  
Maßstab: 1:1

ISO 1302		ISO 13715		 deltaVision GmbH	Name		F4a_MK1_ICD						
					pr.-Nr.		Projekt						
Beschichtung					prd-00064699		F4a						
Material													
Masse	104 g	Status	Released	Version	A	Autor	S. Klukas 14/01/2025	drw.-Nr.	drw-00004746	Ref.	ISO 8015 DIN ISO 5456-2 ISO 2768-mK	Format	A4

The reproduction, distribution and alteration of this document as well as the communication of its contents to others without express authorization is prohibited. Offenders will be held liable for the payment of damages. All rights reserved in the event of the grant of a patent, utility model or design.

Wiedergabe sowie Vervielfältigung dieses Dokuments, Verwertung und Mitteilung seines Inhalts ist ohne schriftliche Genehmigung ausdrücklich untersagt. Zuwiderhandlungen verpflichten zu Schadenersatz. Alle Rechte für den Fall der Patent-, Gebrauchsmuster- oder Geschmuckensurteilung vorbehalten.



ISO 1302		ISO 13715		 deltaVision GmbH	Name		F4a_GHC_MK1_ICD										
					prj-Nr.		Projekt										
Beschichtung		-			prd-00066559		F4a GHC										
Material		-		Masse		Status		Version		Autor		drw-Nr.		rel.		Format	
				616 g		Released		A		S. Klukas 01/20/2025		drw-00004830		ISO 8015 DIN ISO 5456-2 ISO 2768-mK		A4	